

Clair-Mel Elementary School

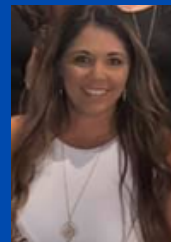


ABOUT CLAIR-MEL...

Clair-Mel Elementary is a hidden gem. Our school community is focused on using the strengths of one another in a positive environment to help our students and staff reach their full potential. We are a community school with the majority of our students walking or driving to school each day. We have a high Hispanic population and work to ensure all of our families have the support they need to build a strong partnership to help our students to be productive citizens. #CougarPride



Why Clair-Mel Elementary?



Clair-Mel is a great place to work. We have the most supportive administration, and all of our staff work collaboratively to ensure our students are successful, safe, and loved. If you're looking for a workplace where you feel valued and supported, Clair-Mel is the place to be! Come join our Cougar Family!

-Melissa Davis, ESE Specialist



I have been teaching at Clair-Mel since 2018. I feel blessed to work at a place where the staff feels like family and we work together to ensure student success. Most of all, I am grateful to have the best administration who goes above and beyond to make sure the staff is supported.
#CougarPride

-Brittany Calandra, 4th Grade
Math/Science

Home of the Cougars



Join our Team

We have a high-quality team ready to do whatever it takes for our students to be successful. We go above and beyond to support our staff so you may be successful. I believe that my job as a leader is to support our school community. If you care about making a difference in the lives of the children we serve, we would love to have you on our team.



Dr. Gloria Waite
Principal



BENEFITS OF WORKING AT CLAIR-MEL ...

- Weekly planning support with content area coaches
- Daily 60-minute individual planning
- Site-based professional development
- Opportunities to departmentalize in ELA or Math & Science
- School-wide PBIS Rewards initiative
- Up to \$5000 additional pay for Highly Effective and Effective rated teachers - visit Transformation Network website for more information



I came to Clair Mel as a first-year teacher in 2020. This school quickly felt like home, and I was given the tools and support to be successful. Our administration have an open-door policy and they advocate for their students and teachers. Yellow and blue would look good on you! Come join our team!

-Samantha Diller, ESE-VE Teacher



I began teaching Clair-Mel Elementary in 2019. Prior to that, I worked at a school with wonderful co-workers and students that I loved. What separated Clair-Mel is that along with those two key elements, here, we have an administration that supports the staff and our growth. In my case, they support the Arts and our program.

-John Paret, Art Teacher



I have enjoyed working at Clair-Mel for the last 4 years. We have a supportive administration who encourages you to grow and be successful. I have become close friends with my teammates and have enjoyed working with the community to help our students grow.

-Daina Strunk, 4th Grade ELA

Scan QR code to access the Hillsborough County Public Schools Transformation Network website for more information on recruiting benefits:

